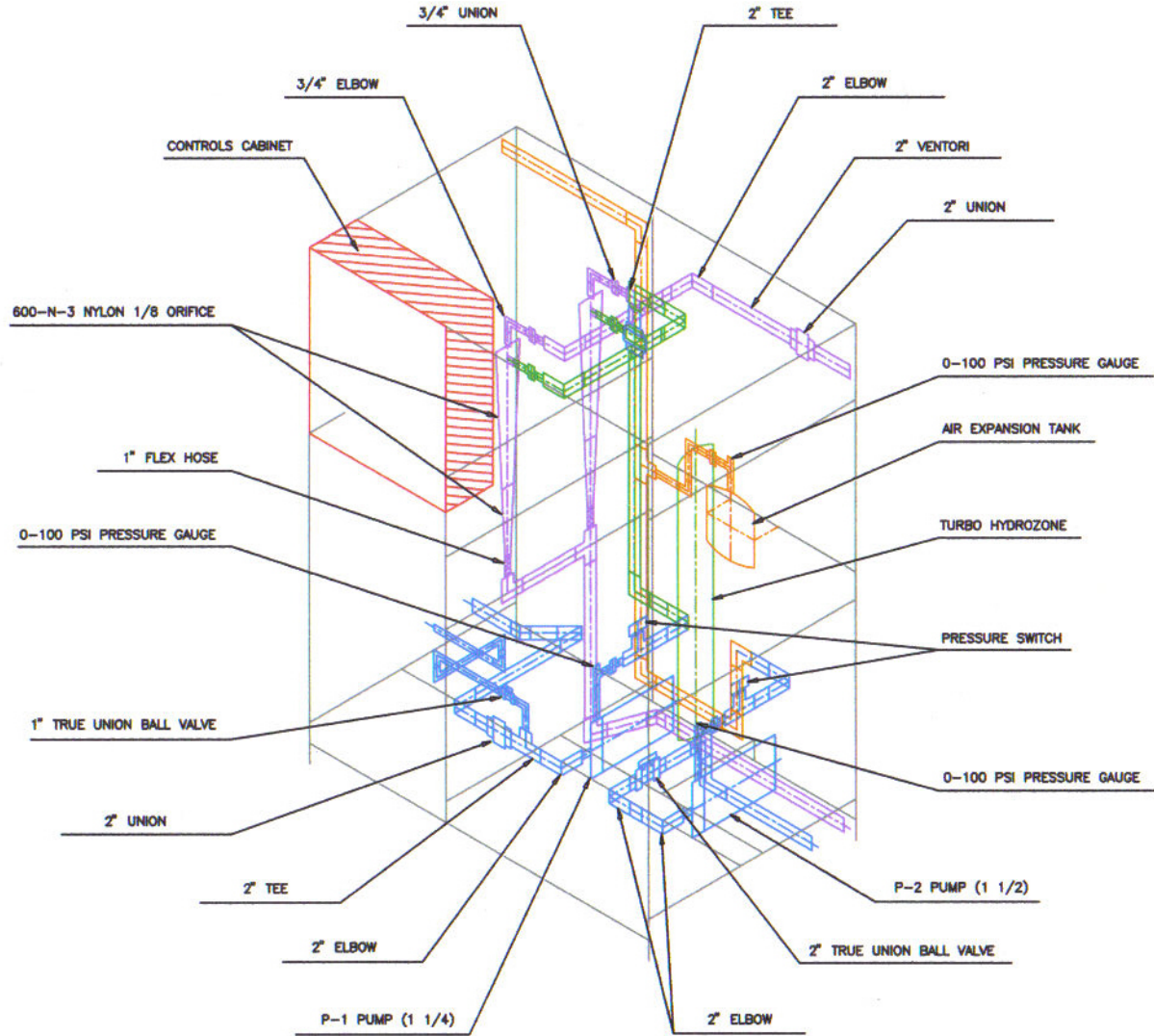


# PLUMBING BILL OF MATERIAL FOR WATER RECLAIM UNIT

ITEM	DESCRIPTION	QNTY.
1	3/4" FEMALE ADAPTER T/S	3
2	3/4" FEMALE ADAPTER T/T	2
3	3/4" ELBOW S/S	2
4	3/4" UNION S/T	4
5	3/4" x 1" BUSHING S/S	1
6	3/4" x 2" BUSHING S/S	6
7	1" TEE	4
8	1" x 1/2" BUSHING S/S	5
9	1/2" 1/4" BUSHING S/T	5
10	1" MALE	2
11	1" UNION	3
12	1" ELBOW	7
13	1" x 2" BUSHING S/S	7
14	1 1/2" MALE ADAPTER	1
15	1 1/4" MALE ADAPTER	1
16	2" x 1 1/2" BUSHING S/S	1
17	2" x 1 1/4" BUSHING S/S	1
18	2" ELBOW	18
19	2" TEE	7
20	2" 45° ELBOW	4
21	2" TRUE UNION BALL VALVE	1
22	1" TRUE UNION BALL VALVE	2
23	2" CLICS	13
24	1" CLICS	5
25	6" UNISTRUT CLAMP	2
26	8" UNISTRUT CLAMP	1
27	PRESSURE SWITCH	2
28	0-100 PSI PRESSURE GAUGE	3
29	600-N-3 NYLON 1/8 ORIFICE	2
30	AIR EXPANSION TANK	1
31	EBARA PUMP	2
32	TURBO HYDROZONE	1
33	VENTORI	1
34	2" UNION	7
35	2" FEMALE ADAPTER T/S	2
36	--	--

### GENERAL NOTES:

1. ALL PIPING SHALL BE SCH. 80 MATERIAL.



ISOMETRIC PLUMBING VIEW



**RIESKAMP**  
EQUIPMENT COMPANY, INC.  
8068 WOODLAND DRIVE INDIANAPOLIS, IN 46278

---

REVISION DATE:

---

**WATER RECLAIM UNIT**  
**MODEL #**  
**PLUMBING DIAGRAM**

---

DRAWN BY:  
CRI

DATE:  
JUNE 15, 2005

JOB NUMBER:

---

DRAWING No.  
**M-7**